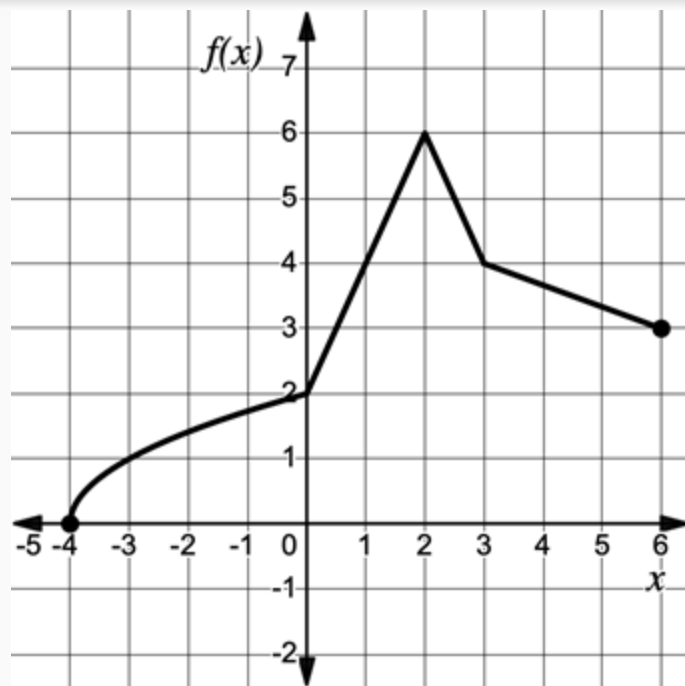


Tell Me Something True

# Instructions

- The class is split into two teams.
- A prompt will be shown with some information about a function.
- Teams will take turns saying “something true” (and Precalc related) about the given data.
- Teams will go back and forth until one team can not come up with “something true” about the prompt. The other team then earns a bonus.
- Bonus points are given for great responses.
- All players on a team must take turns saying “something true”.

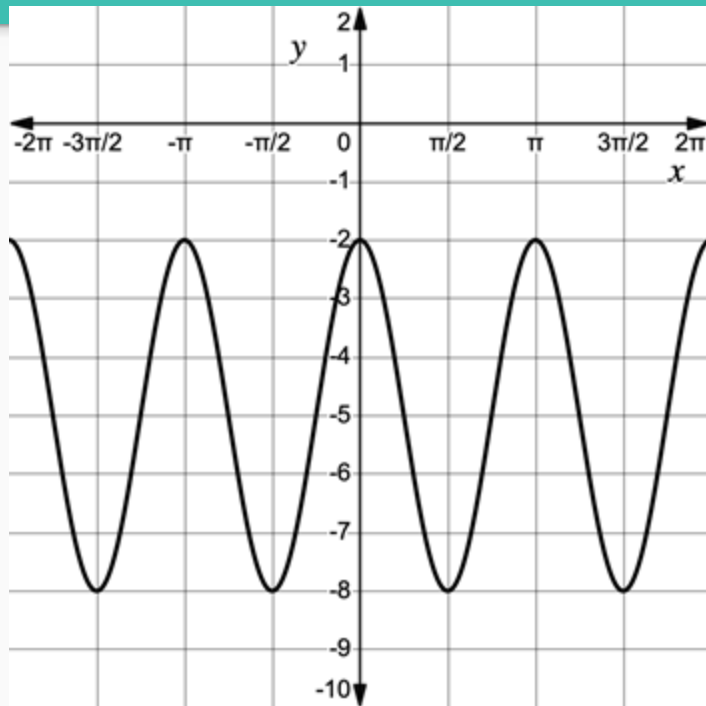
The graph of  $f$  is shown below on  $[-4,6]$ .



Selected values of a polynomial function  $g$  are given in the table below.

$x$	-2	0	2	4	6	8	10
$g(x)$	7	12	14	13	9	2	-8

The graph of  $h$  is shown below.



$$h(x) = 18 \left(\frac{3}{2}\right)^{x-1}$$

Selected values of a one-to-one function  $f$  are given in the table below.

$x$	-5	-3	0	1	4	8	11
$f(x)$	25	21	16	13	4	-2	-6

An element is known to decay by 50% every 7 days.



$$f(w) = 2 \log_5(25w)$$