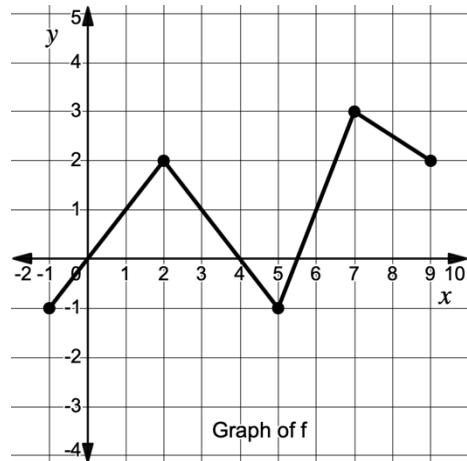


x	$h(x)$	$h'(x)$	$h''(x)$
-3	2	-1	0.5
-1	8	0	-3
1	5	1/2	4
2	4	3	1
3	5	-4	1/3
5	-5	-1	3
8	14	-2	2

* h is twice differentiable for all real numbers.



$$j(x) = 4e^{3x} - \frac{5}{2}x$$

$$g(x) = \begin{cases} 3x^2 - 5x + 2 & x \leq 2 \\ \sqrt{5x + 6} & x > 2 \end{cases}$$

